

169B Darley Avenue, Chorlton, Manchester, M21 7JG



JP & Brimelow
ESTATE AGENTS

Offers In The Region Of £350,000




VIDEO TOUR AVAILABLE An immaculately presented & deceptively spacious, TWO DOUBLE BEDROOM, modern, semi-detached home occupying a fantastic position on this popular residential development. Chorlton Water Park and the Chorlton-Cum-Hardy Golf Club are on your doorstep, centrally located for transport links into the city centre or Manchester Airport by the Metrolink station on Barlow Moor Road. The location is fantastic for both West Didsbury & Chorlton amenities and local primary schools, parks and the motorway network. In brief the well-planned accommodation comprises; an entrance hallway, a downstairs two-piece W.C, a lounge/dining room with access out onto the rear lawned garden and a fitted white kitchen completes the ground floor. To the first floor there are two well-proportioned bedrooms and a modern white three-piece family bathroom. The property benefits from enclosed lawned gardens with a patio area, a driveway providing off-road parking, warmed by gas fired central heating and has solar panels providing efficient green energy. Would suit a professional couple or first-time buyer due to the location.





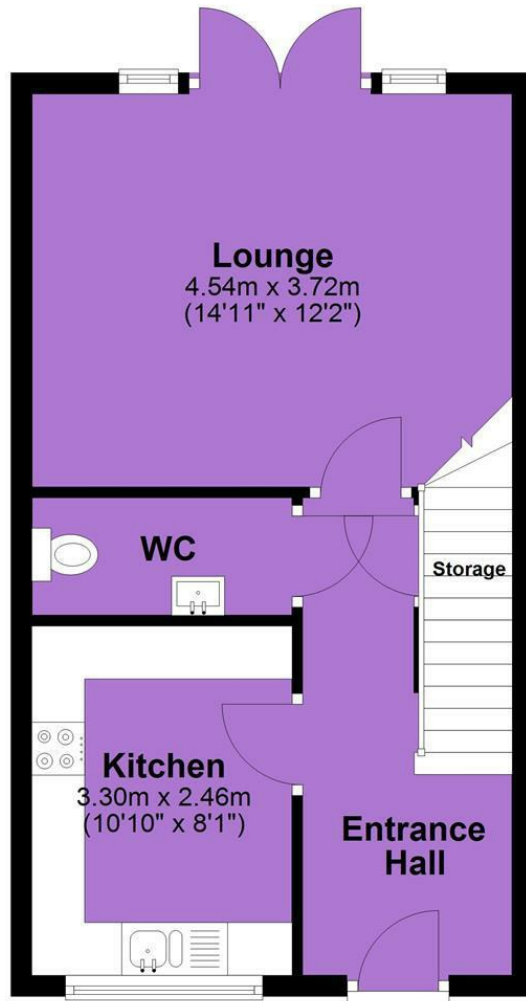
EPC Chart

Energy Efficiency Rating		
	Current	Potential
<i>Very energy efficient - lower running costs</i>		
(92 plus) A		
(81-91) B	82	82
(69-80) C		
(55-68) D		
(39-54) E		
(21-38) F		
(1-20) G		
<i>Not energy efficient - higher running costs</i>		
England & Wales	EU Directive 2002/91/EC 	

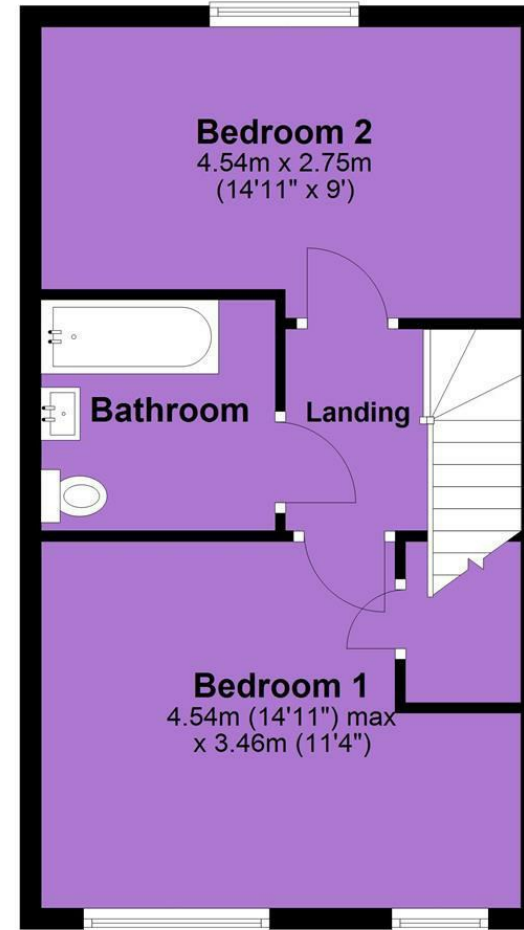


Tenure: **Leasehold** Council Tax Band: **C**

Ground Floor



First Floor



JP & Brimelow Estate Agents Ltd
430 Barlow Moor Road, Manchester, M21 8AD
Tel: 0161 8822233
E: sales@jpbrimelow.co.uk www.jpandbrimelow.co.uk



JP & Brimelow
ESTATE AGENTS

NOTICE: JP & Brimelow Estate Agents Ltd for themselves and for the vendors or lessors of this property whose agents they are give notice that:

- (i) the particulars are set out as a general outline only for the guidance of intending purchasers or lessees, and do not constitute, nor constitute part of, an offer or contract;
- (ii) all descriptions, dimensions, references to the condition and necessary permissions for use and occupation, and other details are given in good faith and are believed to be correct but any intending purchasers or tenants should not rely on them as statements or representations of fact but must satisfy themselves by inspection or otherwise as to the correctness of each of them;
- (iii) no person in the employment of JP & Brimelow Estate Agents Ltd has any authority to make or give any representation or warranty whatever in relation to this property.

jpandbrimelowstateagents

@jpandbrimelow